

Content

Department Name: Colposcopy

Process Name: Patient Journey through Colposcopy from Referral to Post Discharge

Change History:

Version	Draft	Date	Author	Comments
0.1	Y	14/08/2023	Henry Putt	Initial drawing creation
0.2	Y	16/08/2023	Henry Putt	Admin steps added
0.3	Y	21/09/2023	Henry Putt	YDH Admin maps added
0.4	Y	03/10/2023	Henry Putt	YDH Admin maps amended
1.0	N	03/10/2023	Henry Putt	Maps signed off as complete



Improvement team

● Improve health ● Better care ● Lower costs

INDEX


Map 1 Colposcopy Referral and Triage Process MPH – Map No 1 – As Is	Page 5
Map 2 Colposcopy Clinic and Discharge Process MPH – Map No 2 – As Is	Page 6
Map 3 Colposcopy Post Discharge Process MPH – Map No 3 – As Is	Page 7
Map 5 Colposcopy Referral and Triage Process YDH – Map No 4 – As Is	Page 8
Map 4 Colposcopy Clinic and Discharge Process YDH – Map No 5 – As Is	Page 9
Map 6 Colposcopy Post Discharge Process YDH – Map No 6 – As Is	Page 10





Legend


	Symbol used to Indicate the start or end of a process
	Symbol used to indicate an event, task or action
	Symbol used to indicate whiteboard actions
	Symbol used to indicate e-whiteboard actions
	Symbol used to indicate paper documents and proforma activity excluding patient Case Notes
	Symbol used to indicate Case Note activity
	Symbol used to indicate a decision point. The question is shown in the icon and there will be two options
	Symbol used to indicate a choice as to which path to take. There can be multiple outputs.
	Symbol used to indicate a point whereby all output paths should be actioned.
	Symbol used to illustrate Diary/Whiteboard Updates , labelled accordingly i.e Admission Diary = AD Receptionist Diary = RD Transfers Whiteboard = TW Patient Whiteboard = WB


	Symbol used to Indicate the start or end of a process
	Symbol used to indicate a system where data is captured inc. emails
	Symbol used to indicate a reporting point i.e. system generated reports or escalation points to management etc.
	Symbol used to indicate a link to another map
	Symbol used to indicate a link from another map
	Symbol used to illustrate link to maps within other Visio documents
	Symbol used to include a comment or additional information
	One-way arrow used to show sequence of events and what is produced by an event.
	Symbol used to illustrate multiple issues , numbered accordingly
	Symbol used to illustrate multiple ideas , numbered accordingly

 Symbol used to Indicate Happy

 Symbol used to Indicate Indifferent

 Symbol used to Indicate Unhappy

 Symbol used to Indicate Worried

 Symbol used to Indicate Angry

 Defects

 Over Production

 Waiting

 Un-utilised Skills

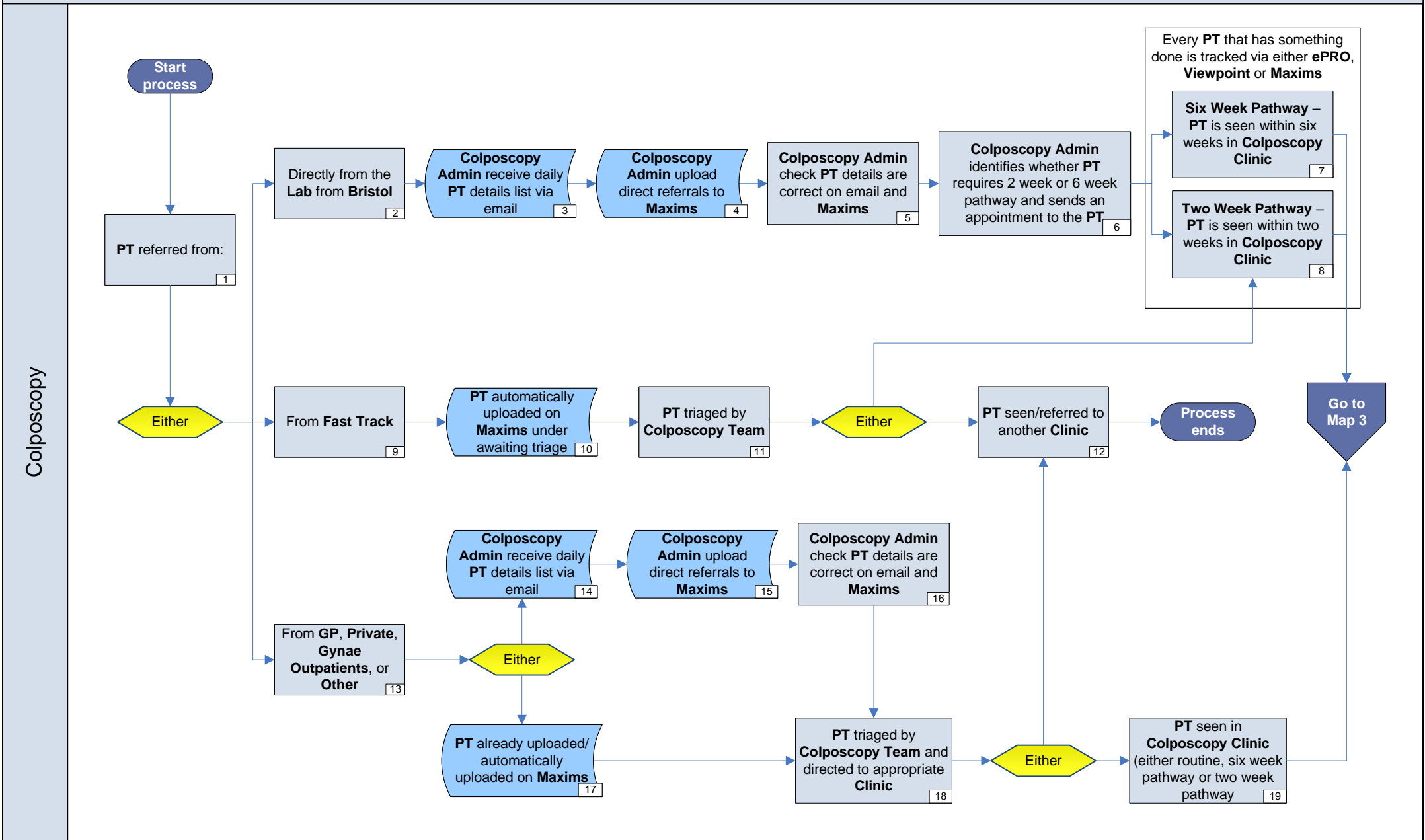
 Transportation

 Inventory

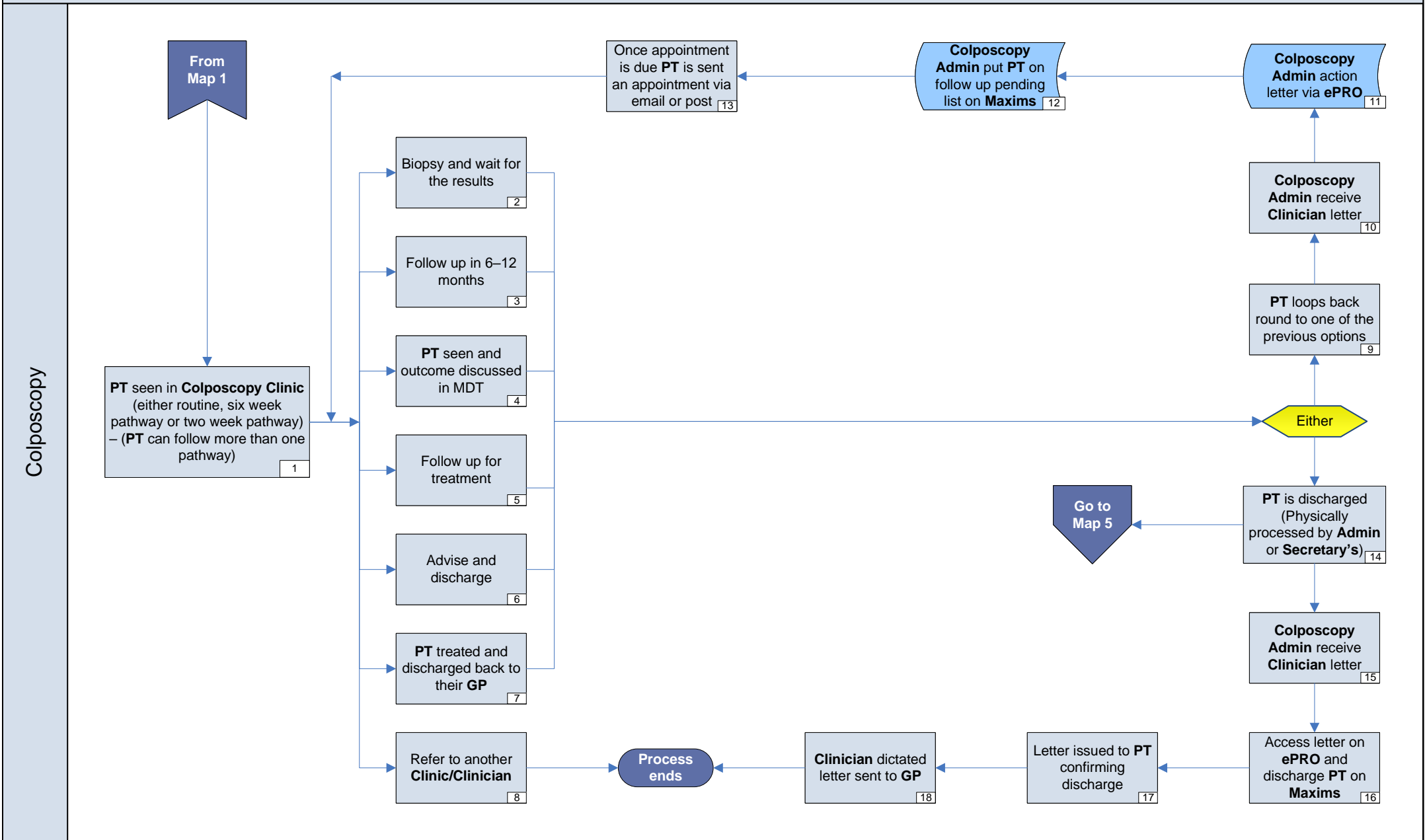
 Motion

 Extra Processing

PT - Patient

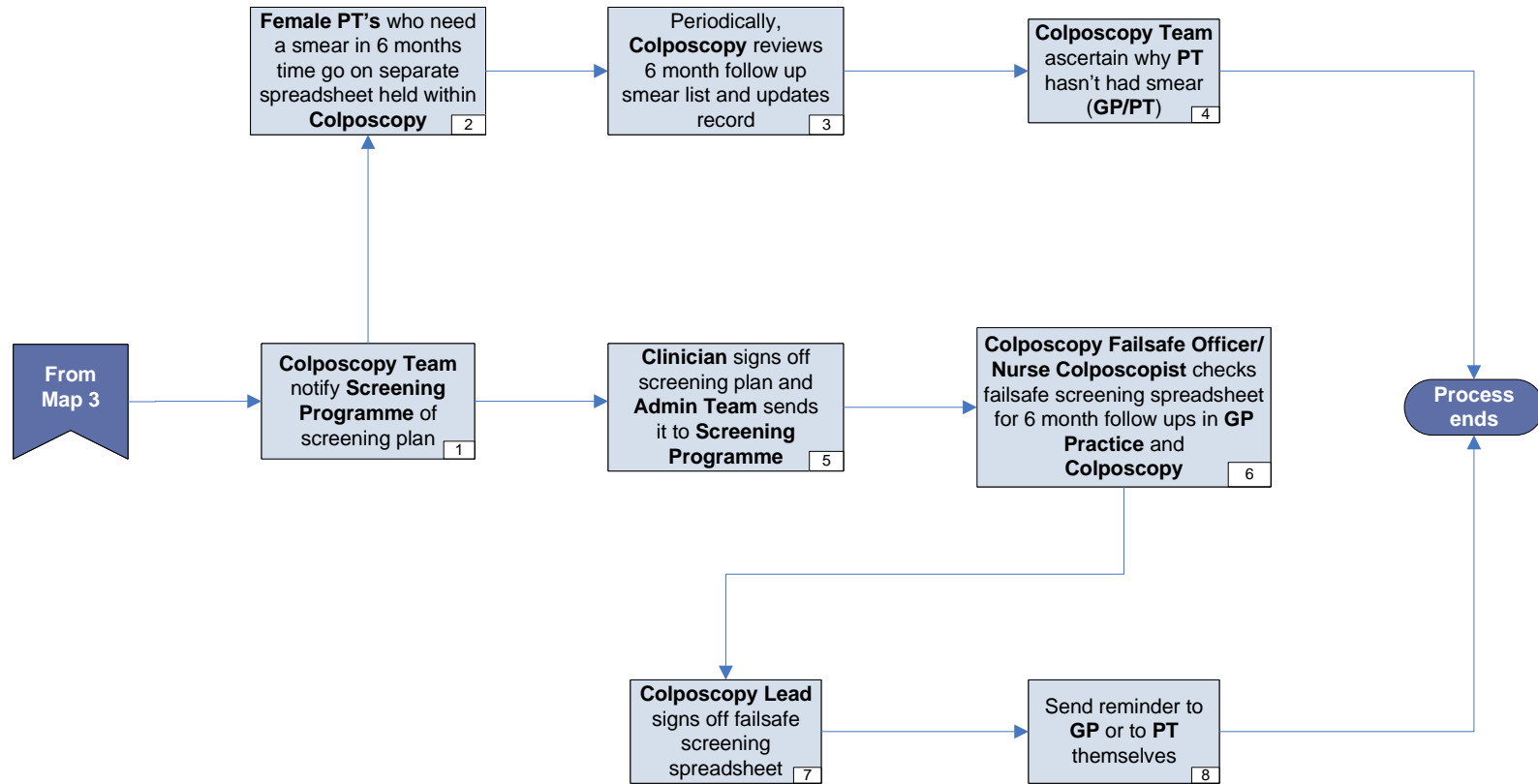


PT - Patient

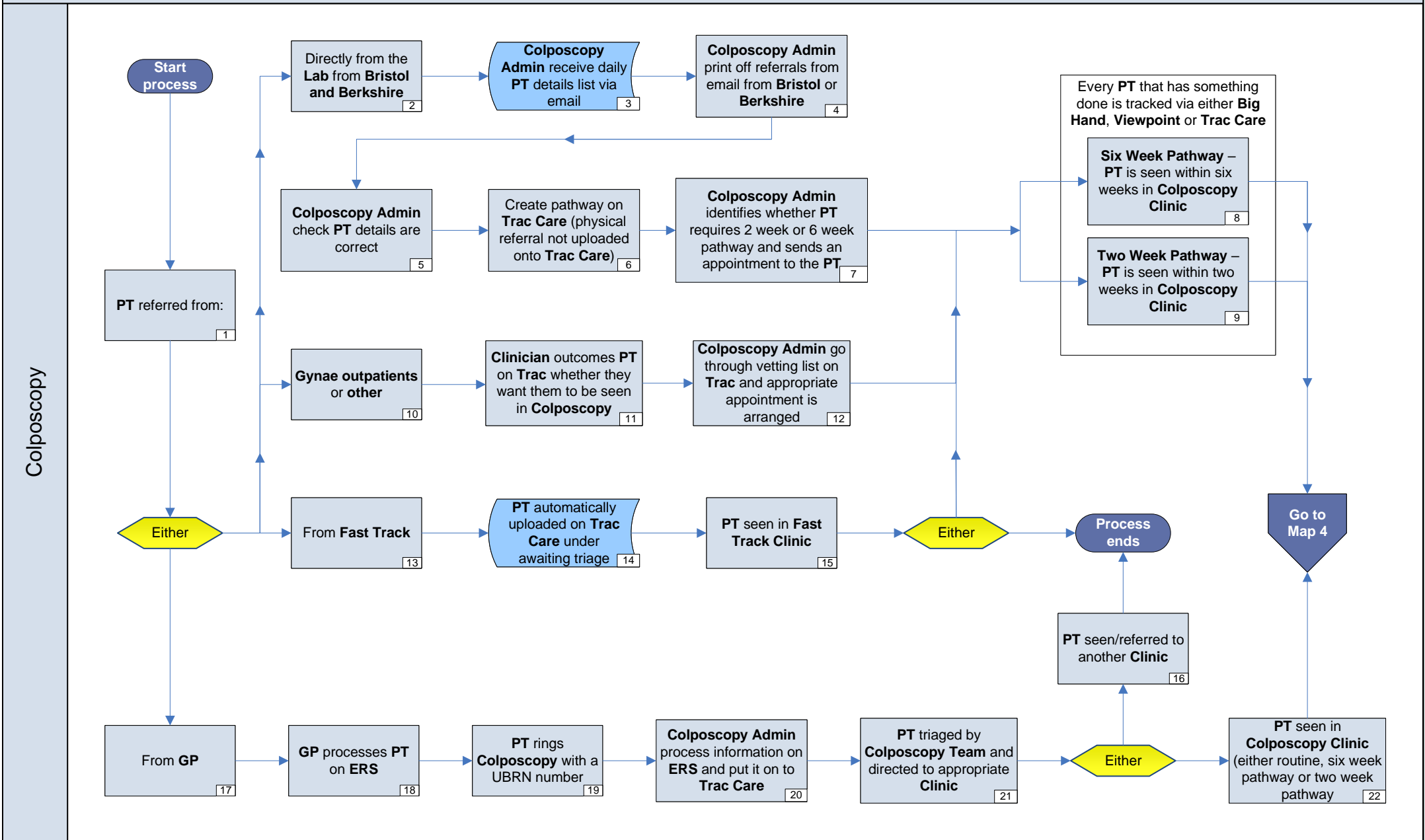


PT - Patient

Colposcopy



PT - Patient



PT - Patient

