

Content

Department Name: Haematology and Oncology – Beacon MPH and YDH

Process Name: Current Haematology and Oncology Process Flows

Change History:

Version	Draft	Date	Author	Comments
0.1	Yes	10/8/23	L Derrick	Sent to Carole to send to colleagues to review maps 1-10
0.2	NO	06/9/23	L Derrick	Maps 1-10 updated
0.1	YES	13/9/23	L Derrick	New YDH Maps added and sent for review
1.0	NO	03/1/23	L Derrick	All maps signed off




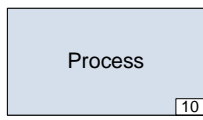

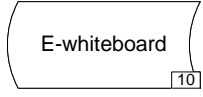
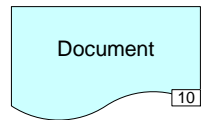
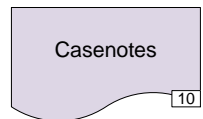
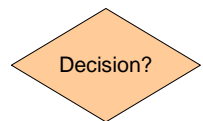



Improvement team


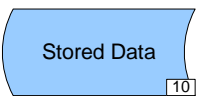




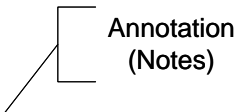
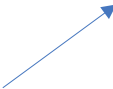


INDEX

Map 1 Oncology YDH – New Patient Referral – Map No 1 – As Is.....	Page 5
Map 2 Oncology YDH – Outcome for New Patient – Map No 2 – As Is.....	Page 6
Map 3 Oncology YDH – Follow Up – Map No 3 – As Is.....	Page 7
Map 4 Oncology YDH – Scheduling Chemotherapy for Oncology – Map No 4 – As Is.....	Page 8
Map 5 Oncology YDH – Patient attend for Treatment – Map No 5 – As Is.....	Page 9
Map 6 Oncology YDH – Pre Assessment – Map No 6 – As Is.....	Page 10
Map 7 Haematology YDH – Referrals and 1 st OPD appointment – Map No 7 – As Is.....	Page 11
Map 8 Haematology YDH – Booking Pre - Assessments – Map No 8 – As Is.....	Page 12
Map 9 Haematology YDH – Pre – Assessments and Outcome – Map No 9 – As Is.....	Page 13
Map 10 Haematology YDH – Identify Patients on Future Appointment Worklist – Map No 10 – As Is.....	Page 14
Map 11 Oncology MPH – Oncology Appointment Flow – Map No 11 – As Is.....	Page 15
Map 12 Oncology MPH – Oncology Appointment Flow 2 – Map No 12 – As Is.....	Page 16
Map 13 Haematology MPH – Haematology Appointment Flow 1 – Map No 13 – As Is.....	Page 17
Map 14 Haematology MPH – Haematology Appointment Flow 2 – Map No 14 – As Is.....	Page 18




Legend


	Symbol used to Indicate the start or end of a process
	Symbol used to indicate an event, task or action
	Symbol used to indicate whiteboard actions
	Symbol used to indicate e-whiteboard actions
	Symbol used to indicate paper documents and proforma activity excluding patient Case Notes
	Symbol used to indicate Case Note activity
	Symbol used to indicate a decision point. The question is shown in the icon and there will be two options
	Symbol used to indicate a choice as to which path to take. There can be multiple outputs.
	Symbol used to indicate a point whereby all output paths should be actioned.
	Symbol used to illustrate Diary/Whiteboard Updates , labelled accordingly i.e Admission Diary = AD Receptionist Diary = RD Transfers Whiteboard = TW Patient Whiteboard = WB

	Symbol used to Indicate the start or end of a process
	Symbol used to indicate a system where data is captured inc. emails
	Symbol used to indicate a reporting point i.e. system generated reports or escalation points to management etc.
	Symbol used to indicate a link to another map
	Symbol used to indicate a link from another map
	Symbol used to illustrate link to maps within other Visio documents
	Symbol used to include a comment or additional information
	One-way arrow used to show sequence of events and what is produced by an event.
	Symbol used to illustrate multiple issues , numbered accordingly
	Symbol used to illustrate multiple ideas , numbered accordingly


Legend

 Symbol used to Indicate Happy

 Defects

 Symbol used to Indicate Indifferent


 Over Production

 Symbol used to Indicate Unhappy

 Waiting

 Symbol used to Indicate Worried

 Un-utilised Skills

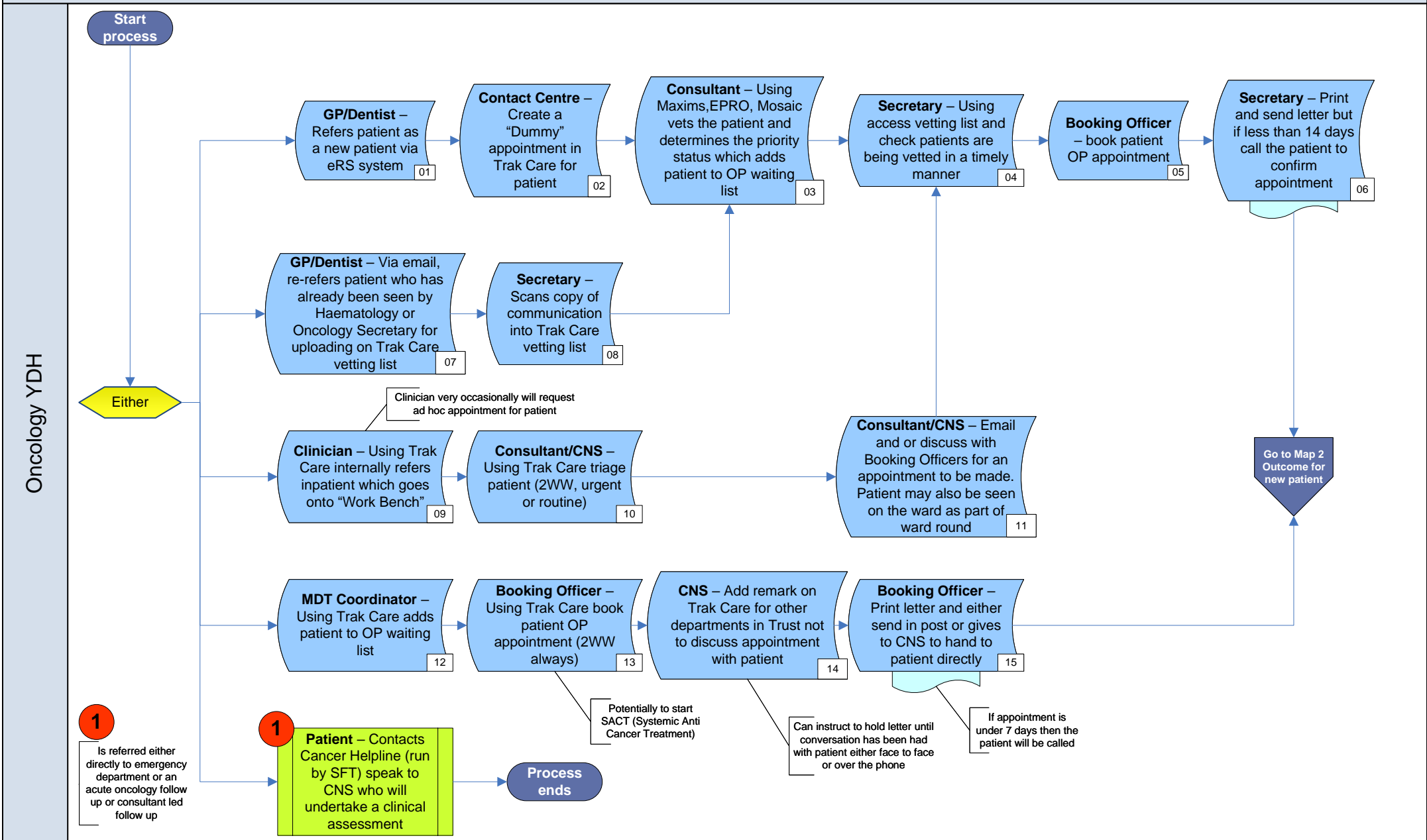
 Symbol used to Indicate Angry

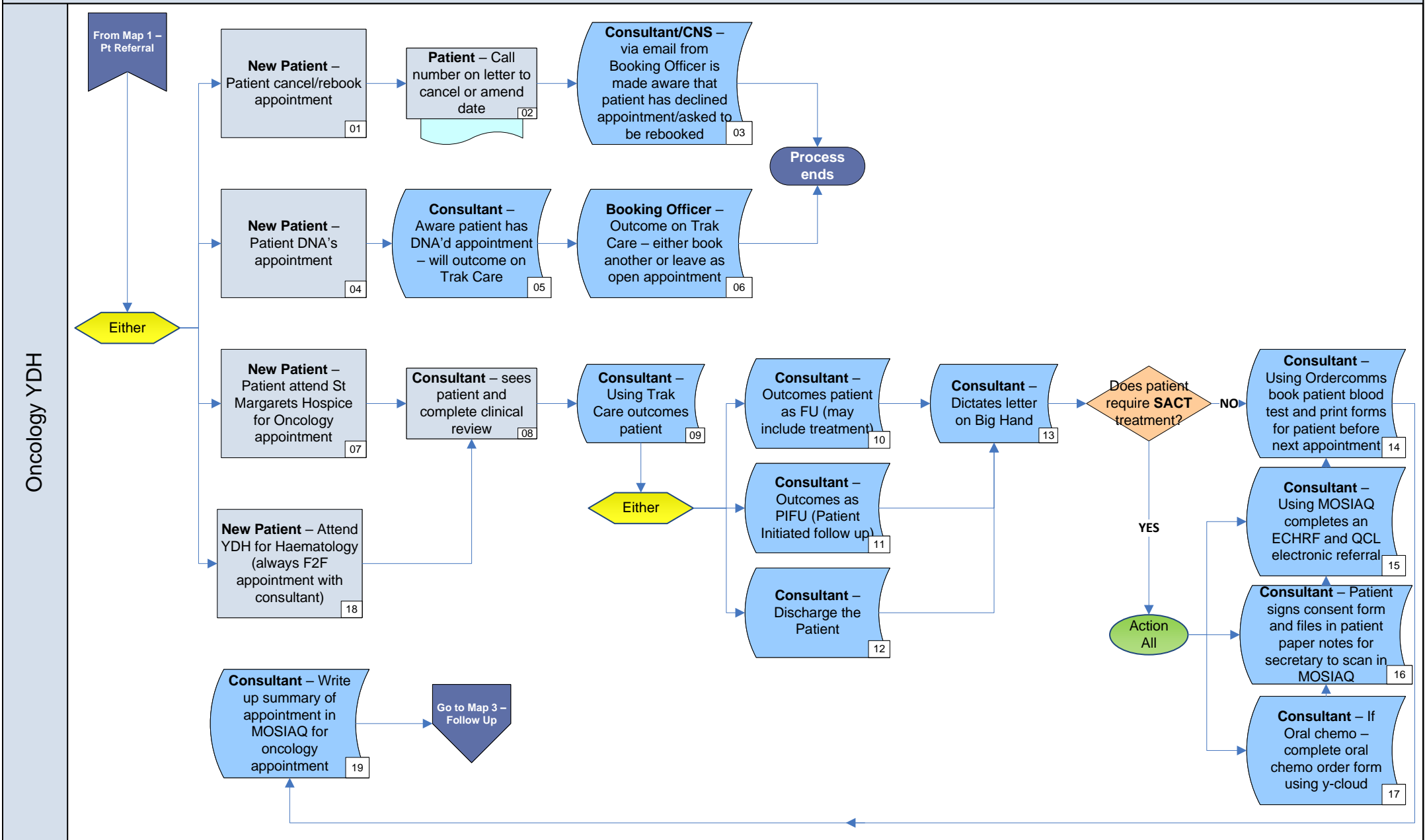
 Transportation

 Inventory

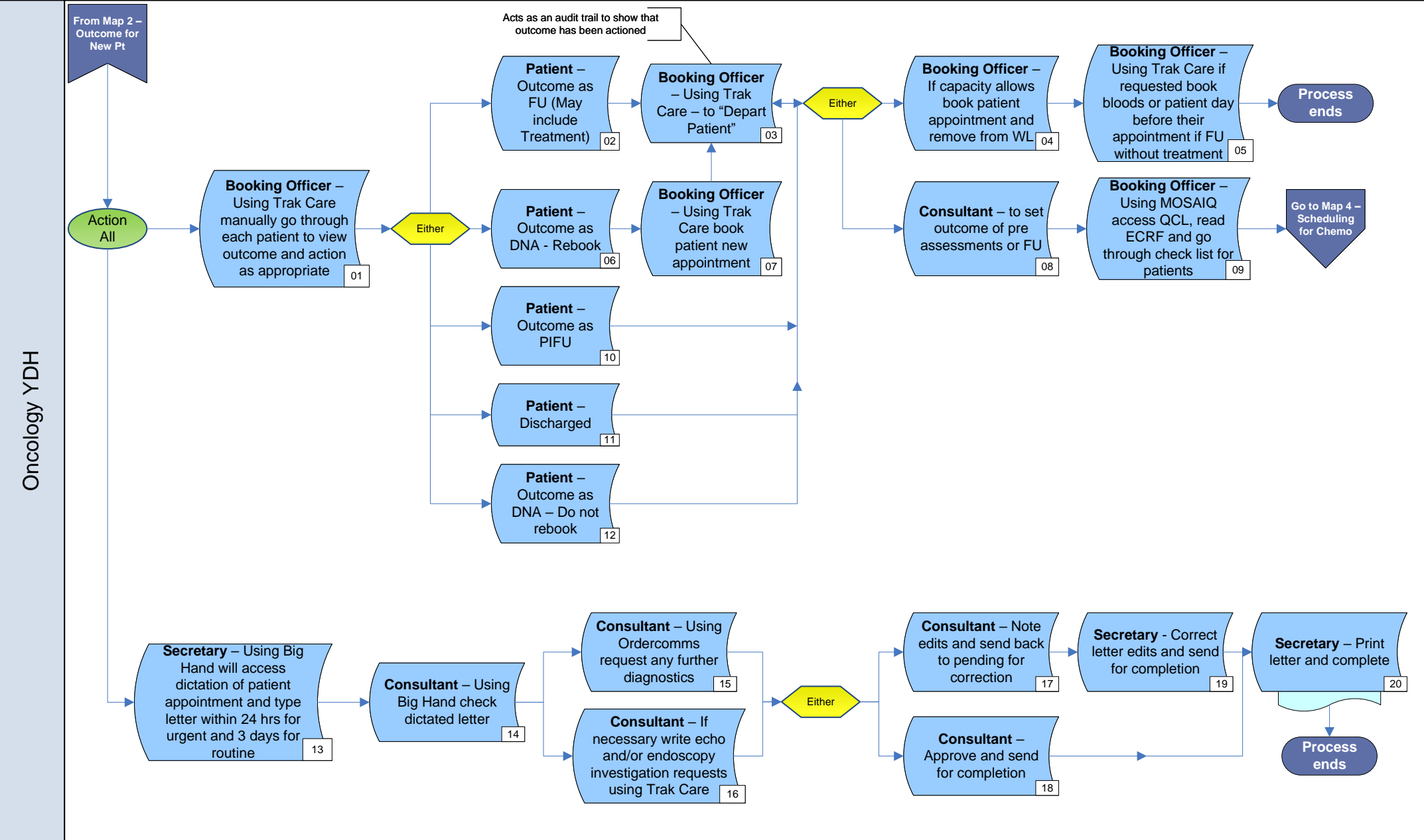
 Motion

 Extra Processing

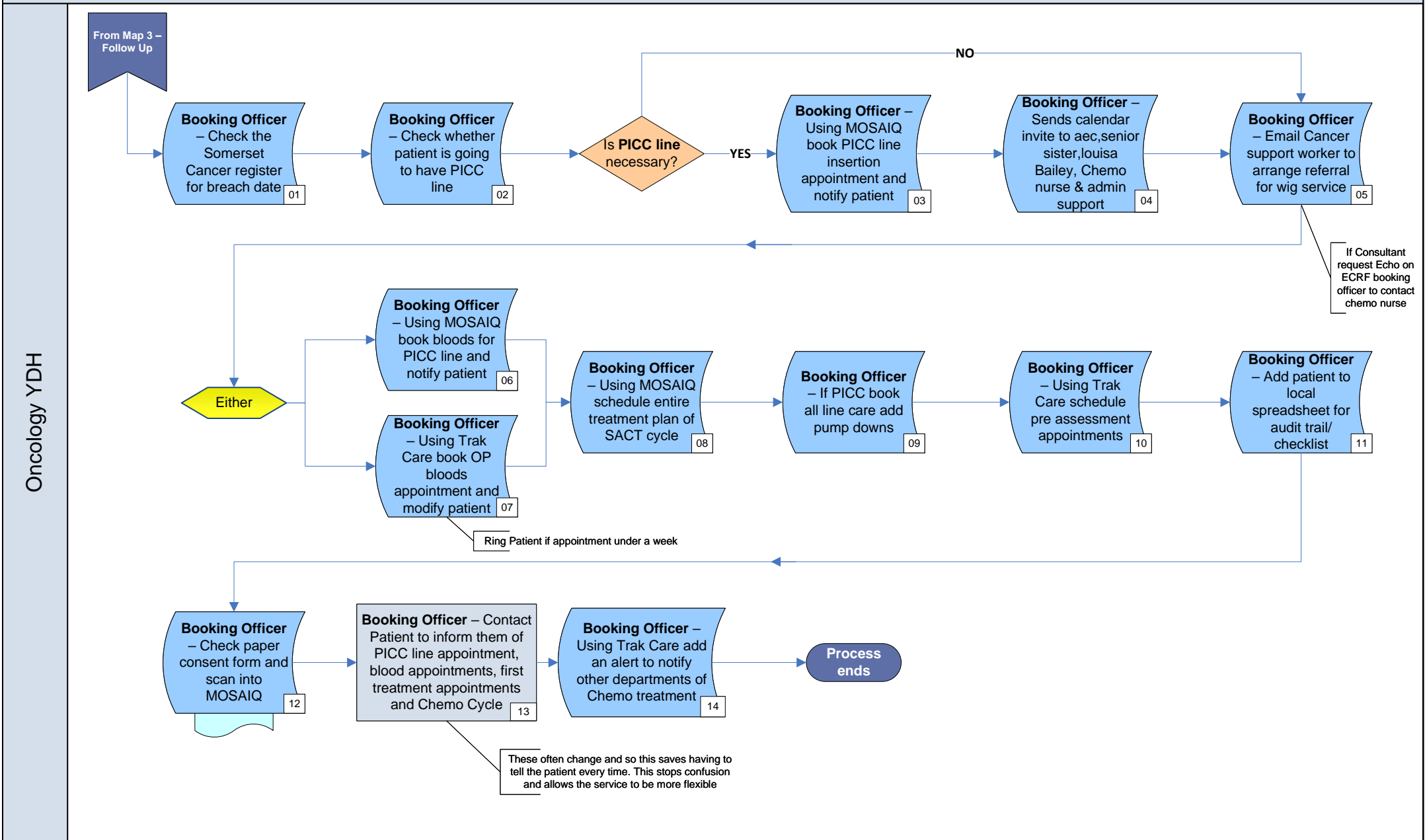




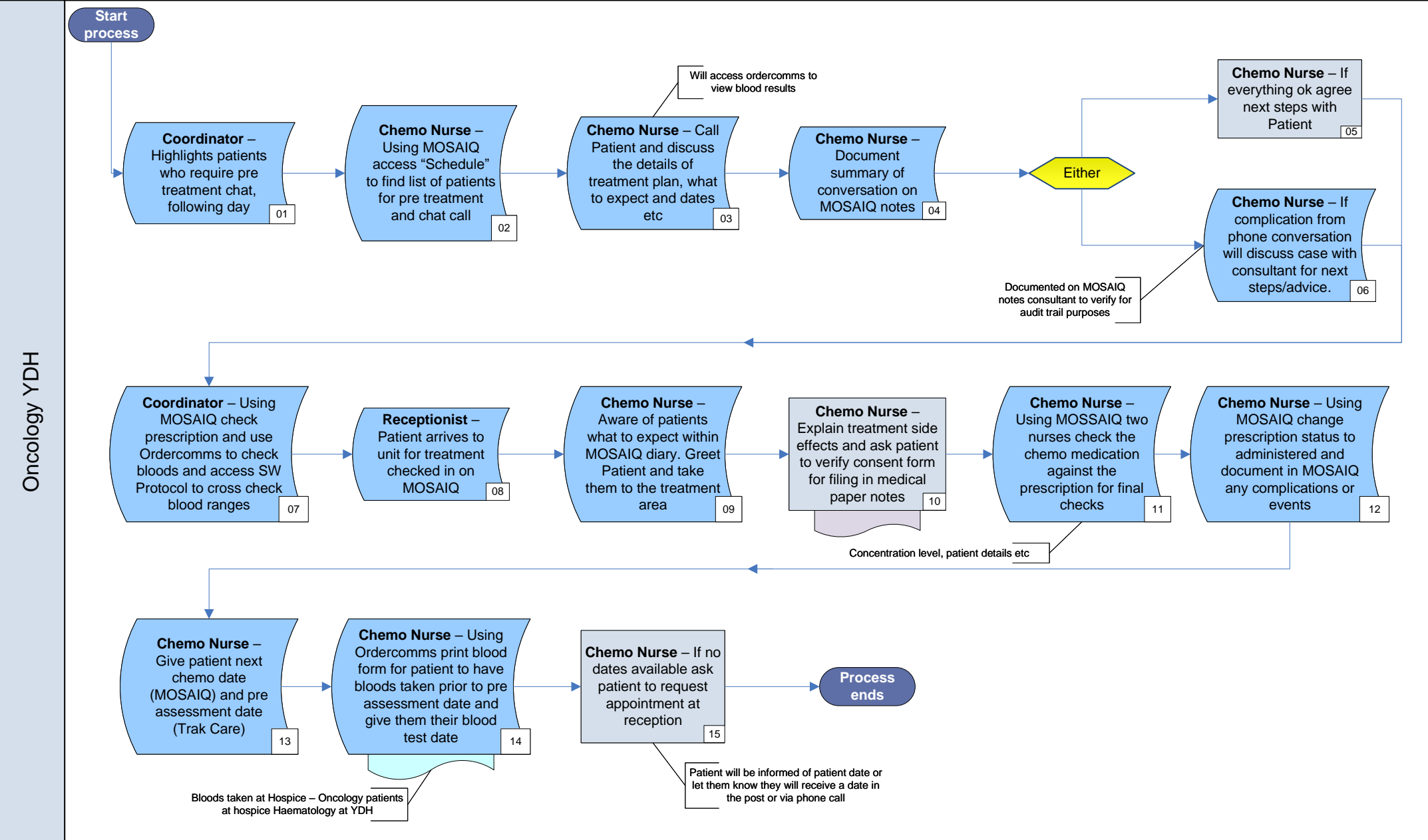
Oncology YDH



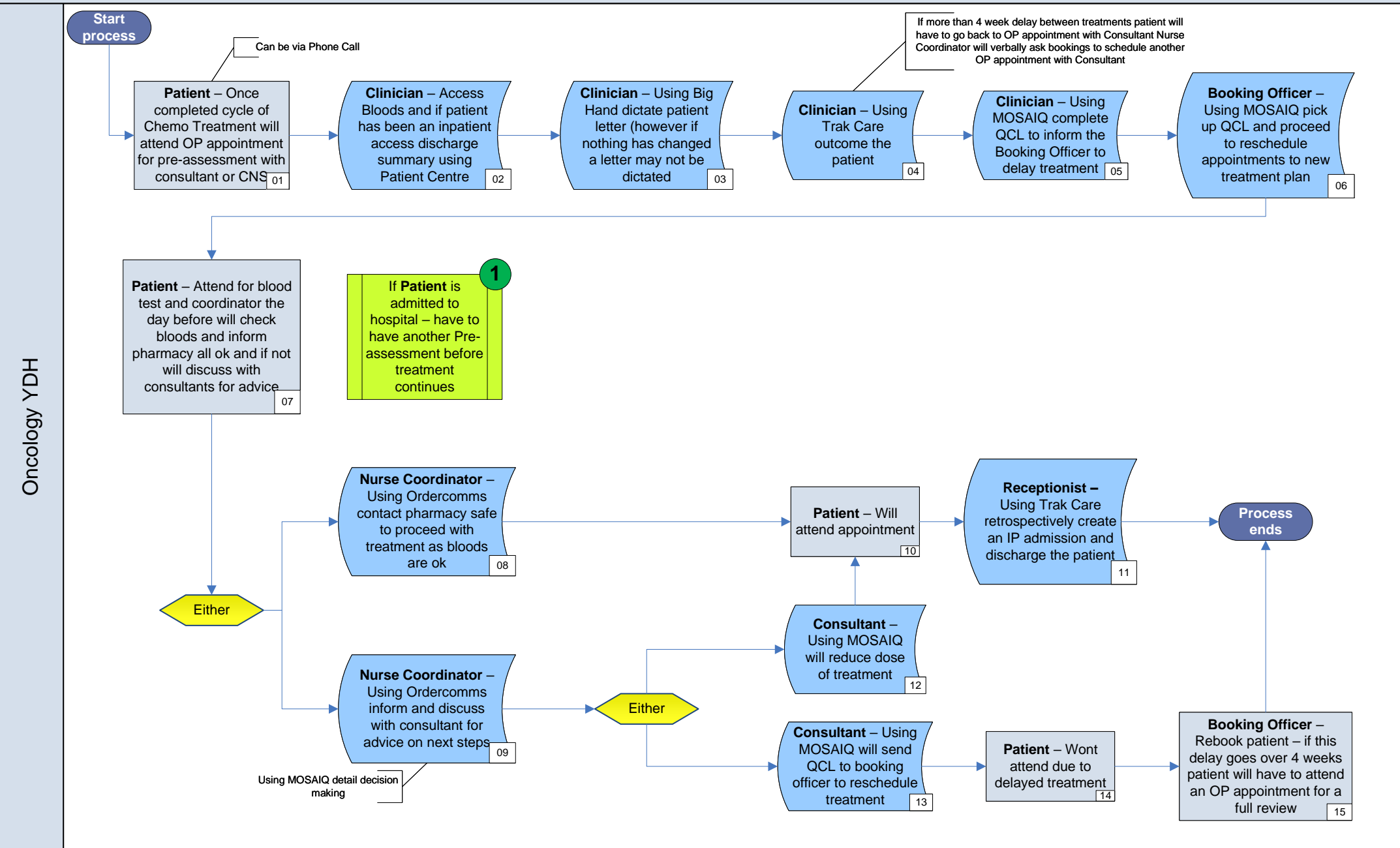
Oncology YDH



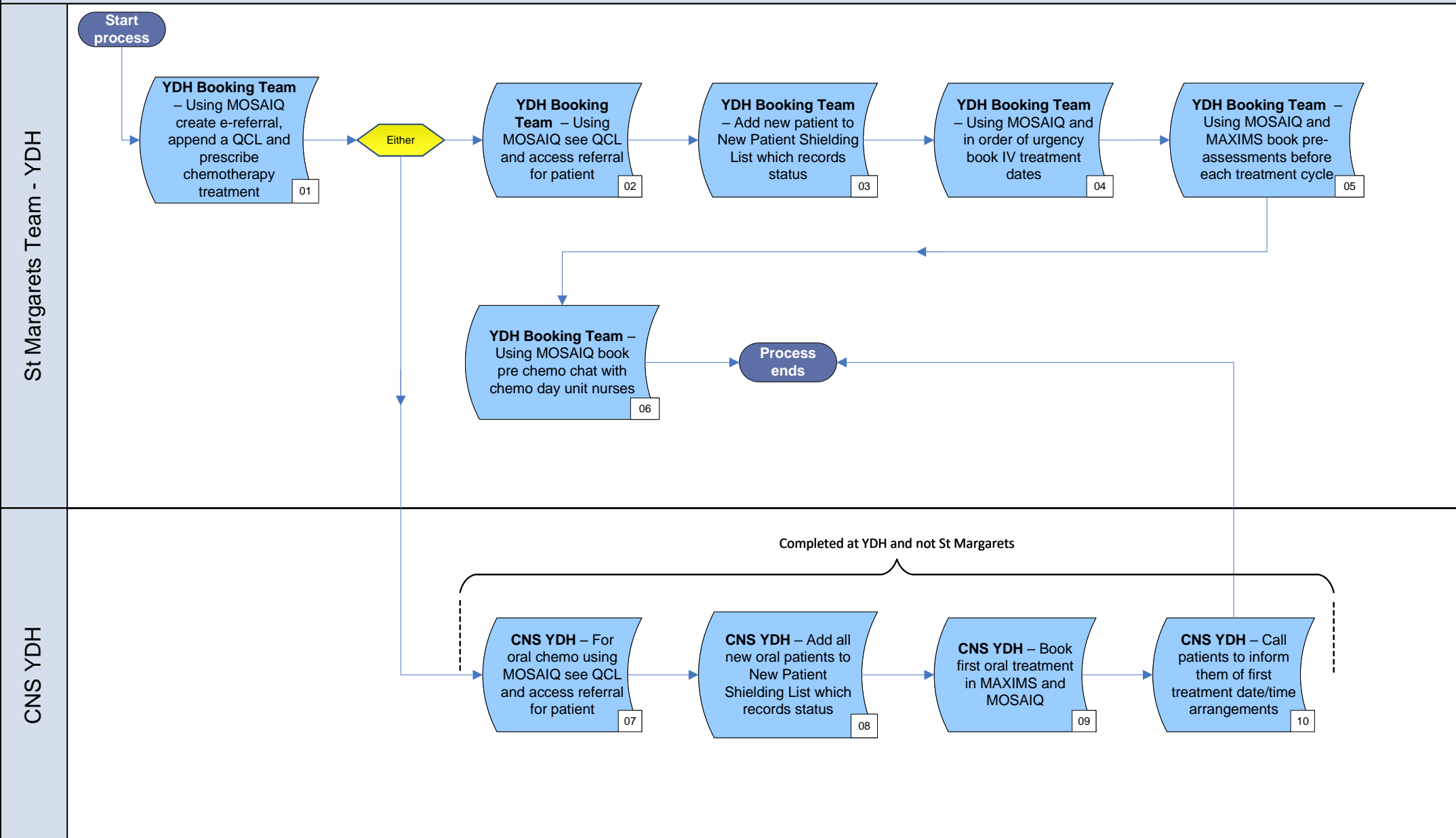
Oncology YDH



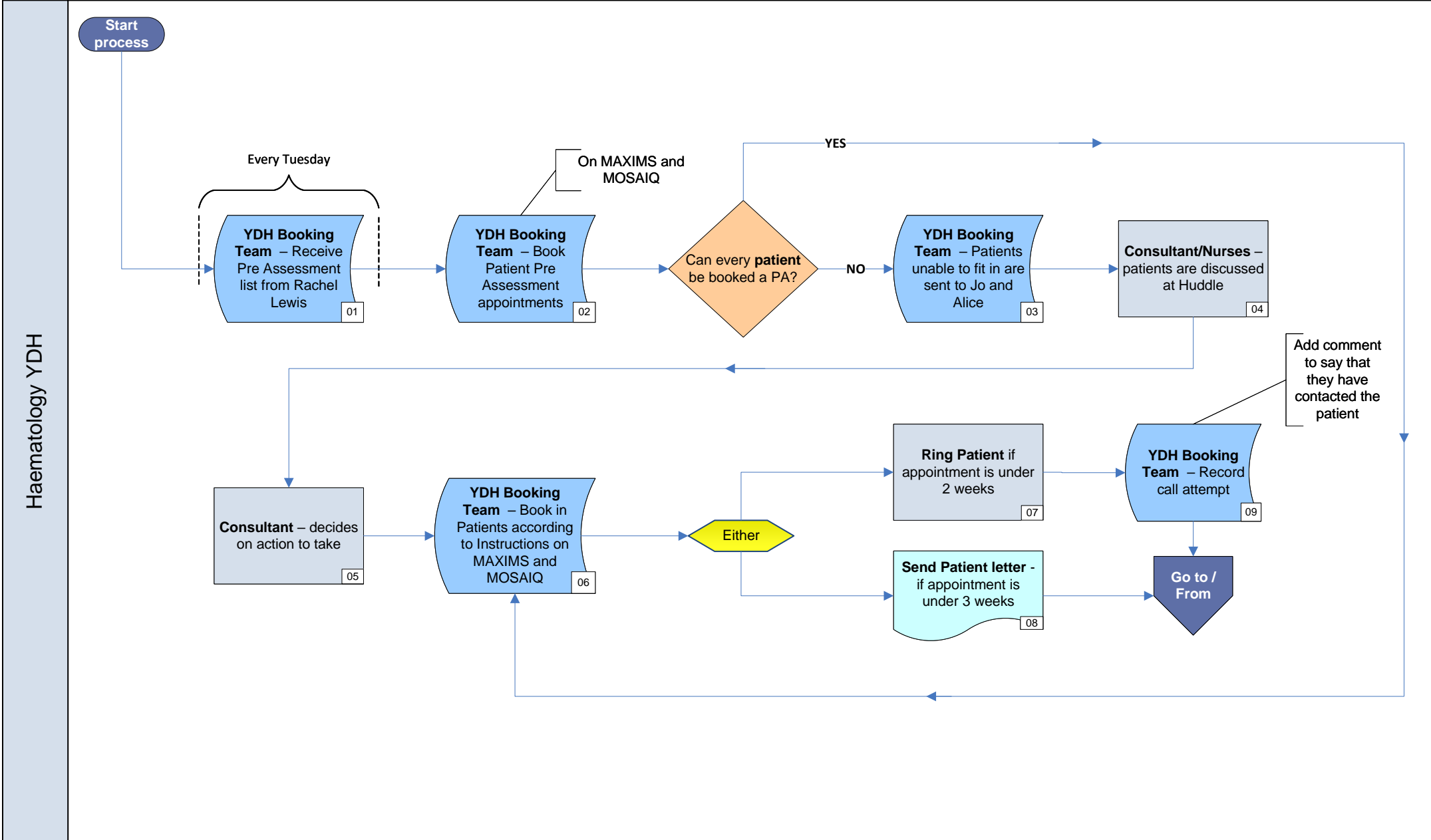
Oncology YDH

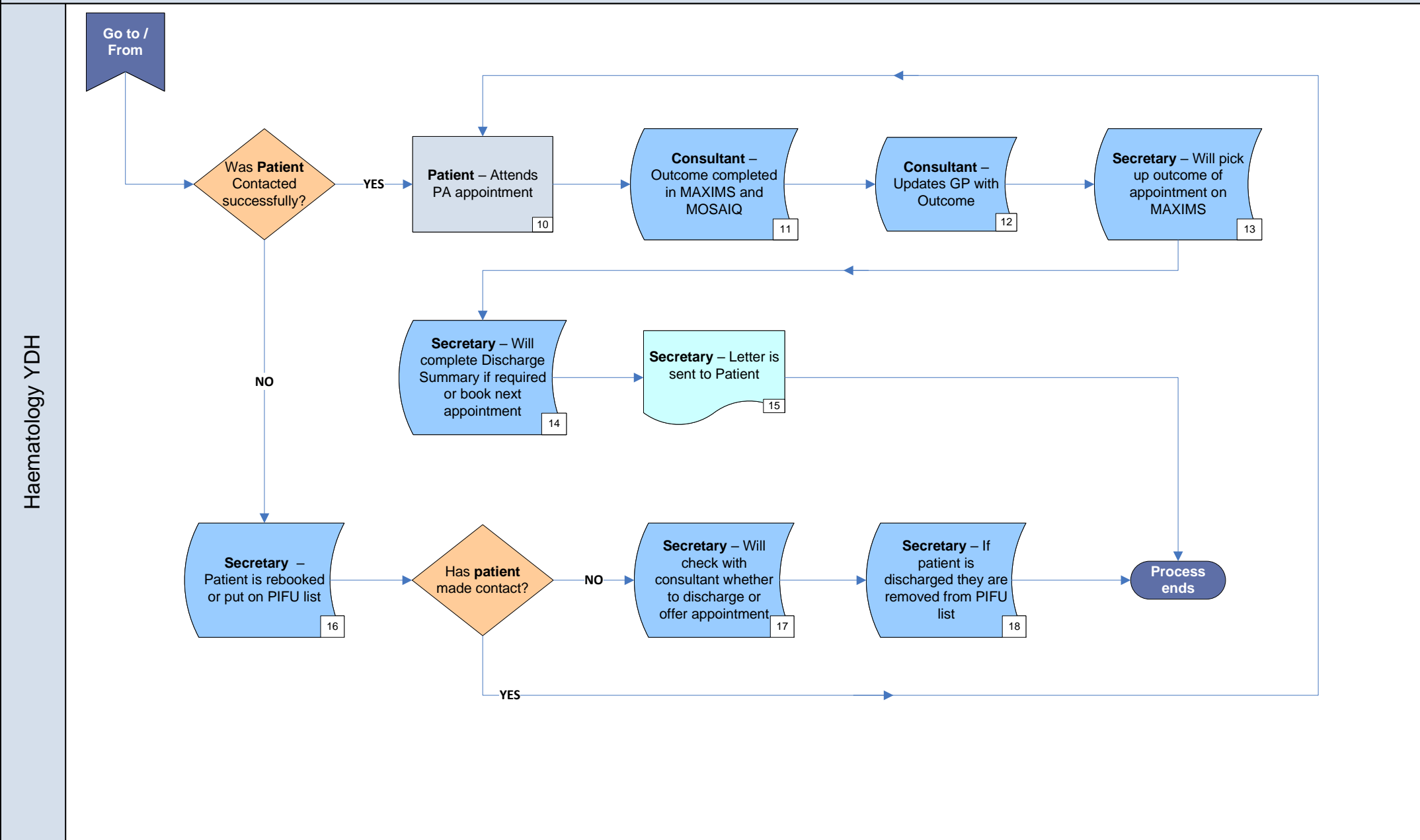


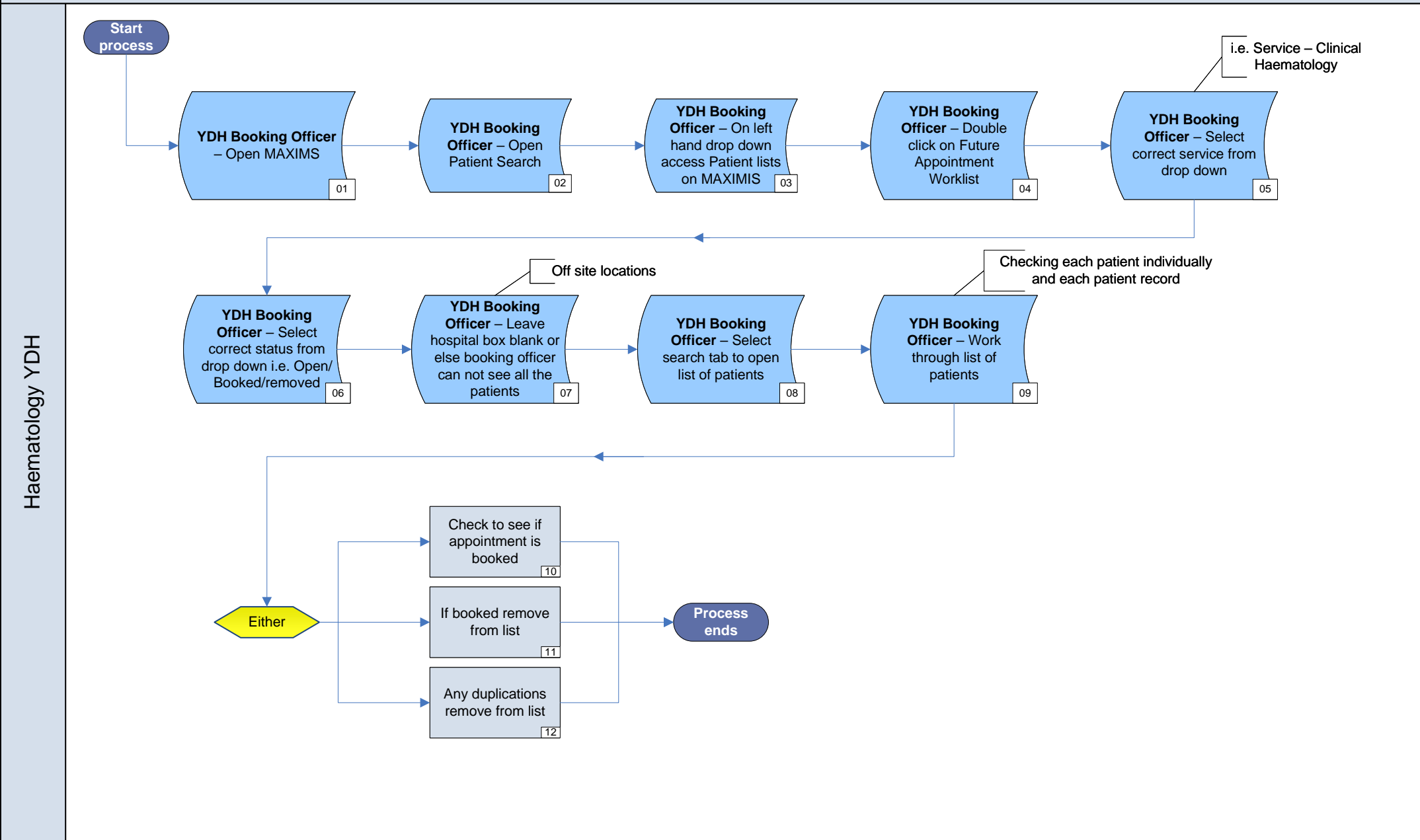
Oncology YDH



PA = Pre Assessment

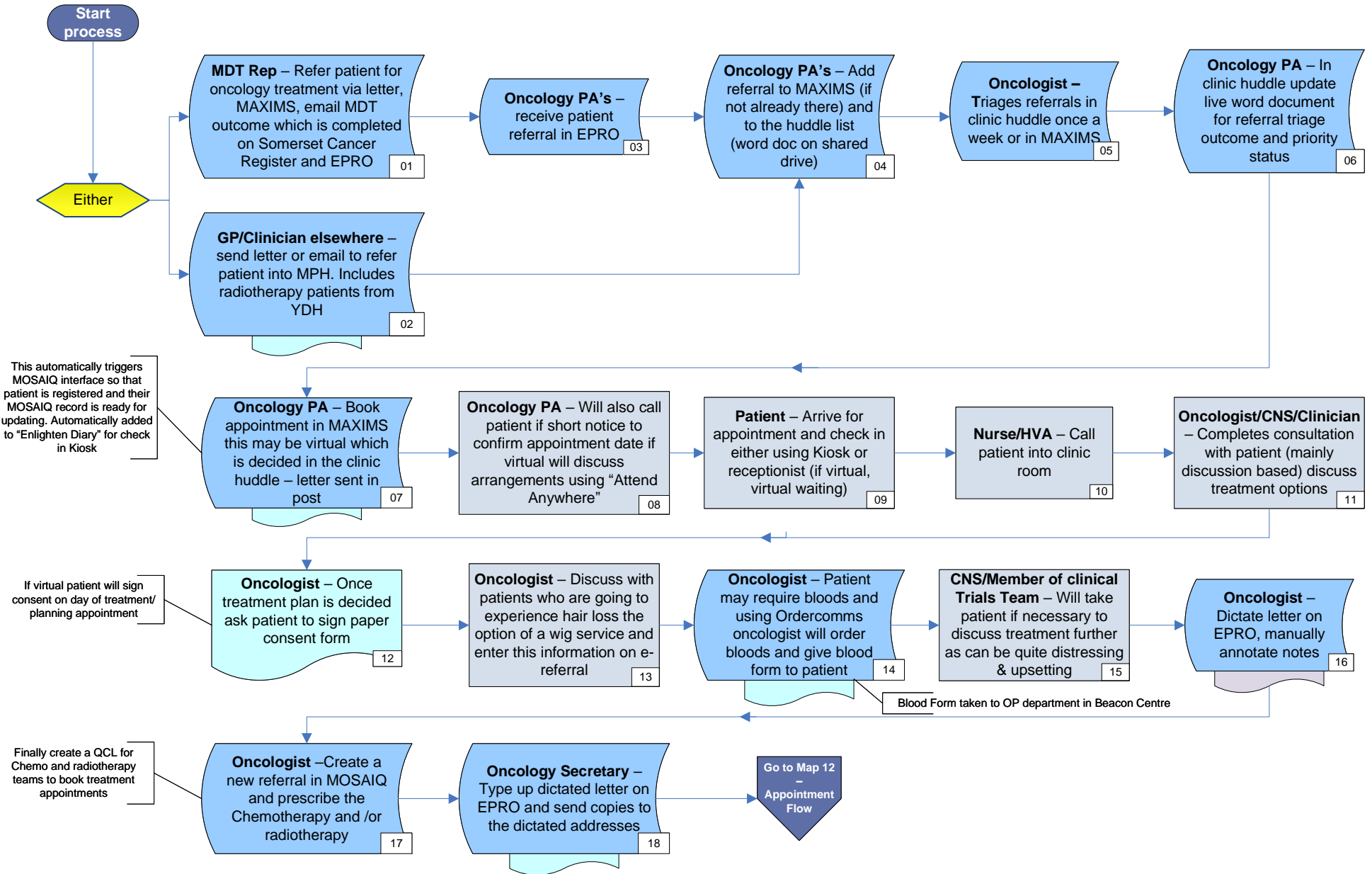


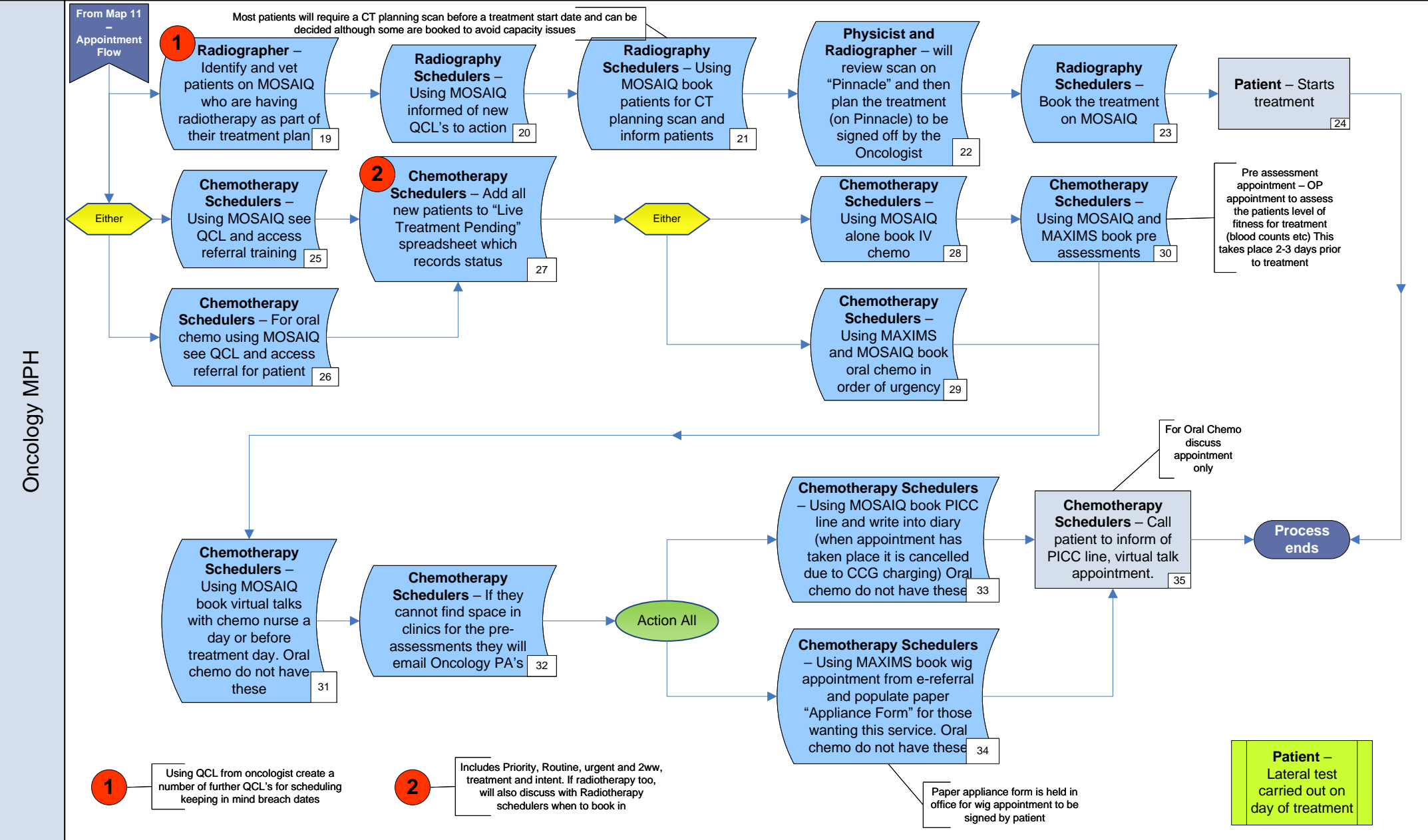


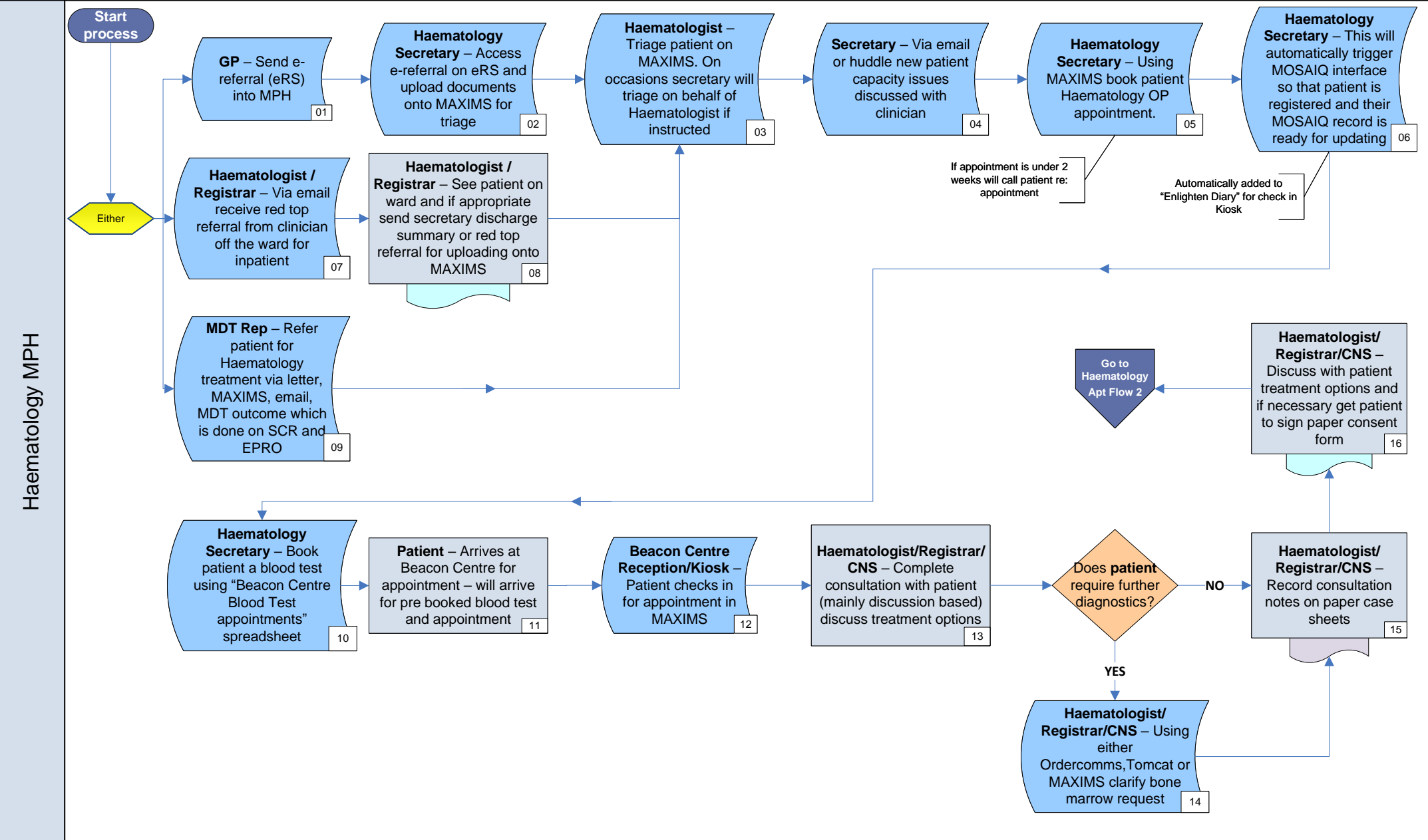


Haematology YDH

Oncology MPH







Haematology MPH

